

PART	QTY	DESCRIPTION	MATERIAL & ASTM SPEC.
1A	1	SIDE PLUG	BRONZE
2A	*	BOLTS	18-8 STAINLESS STEEL
3A	1	O-RING	BUNA-N
4A	1	CAP	CI A-126 CLASS B
5A	1	BODY	CI A-126 CLASS B
16A	1	SPRING	STEEL
17A	1	EXTENDED HINGE PIN	STAINLESS STEEL A-276 (304)
18A	2	KEY FOR LEVER ARM	STAINLESS STEEL A-276 (304)
20AA	1	LEVER ARM	STEEL
21A	1	BRACKET	STEEL
22A	2	HEX HEAD BRACKET BOLTS	STEEL
23A	1	EYE BOLT W/ 2 HEX NUTS	STEEL
24A	1	SIDE PLUG STUFFING BOX	BRONZE
25A	*	PACKING	GRAPHITE FILLED
26A	1	GLAND	BRONZE
28A	1	SET SCREW	STEEL

SIZE	A	B	C	D	E	F	G	H	WEIGHT
2	8	0.66	6	6	6	6	4.72	0.50	40
2 1/2	8.5	0.72	7	6.63	7	6	4.94	0.50	54
3	9.5	0.78	7.5	7.06	7.5	6	5.35	0.50	92
4	11.5	1.00	9	8.31	9	8.25	8.19	0.63	157
6	14	1.06	11	10.06	11	10.25	9	0.75	226
8	19.5	1.25	13.5	12.38	13.5	14.50	10.19	0.88	402
10	24.5	1.31	16	13.93	16.75	18	11.63	1.00	625
12	27.5	1.38	19	16.18	19	18	13.75	1.00	876

USE VALVE FOR VERTICAL OR HORIZONTAL FLOW
 NOTE: VERTICAL FLOW MAY REQUIRE FACTORY REPOSITIONING OF LEVER ARM
 STYLE-259-02A 2"-12" WITH RUBBER FACED CLAPPER
 STYLE-259-02 2"-12" WITH BRONZE FACED CLAPPER
 STYLE-259-02ALS 2"-12" WITH RUBBER FACED CLAPPER & LIMIT SWITCH
 STYLE-259-02LS 2"-12" WITH BRONZE FACED CLAPPER & LIMIT SWITCH

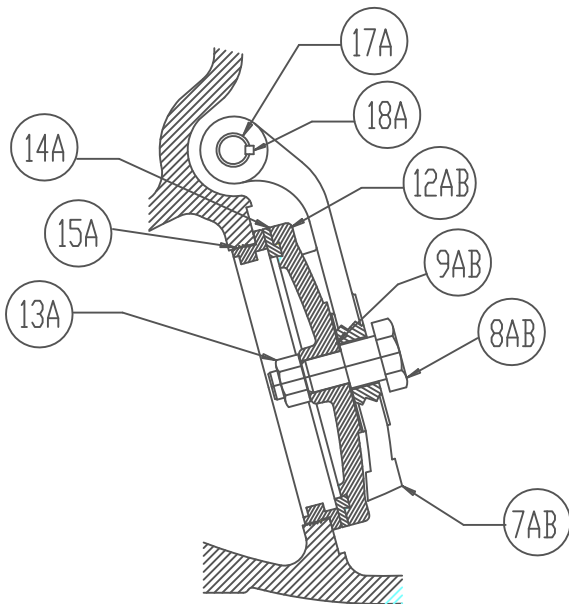
LIMIT SWITCH OPTION		
30A	1	LIMIT SWITCH PER ENGINEER SPEC
31A	1	BRACKET STEEL
32A	*	MOUNTING SCREWS ZINC PLATED STEEL

* VARIES ACCORDING TO SIZE

M&H VALVE COMPANY
 ANNISTON, ALABAMA
 A DIVISION OF MCWANE INC.

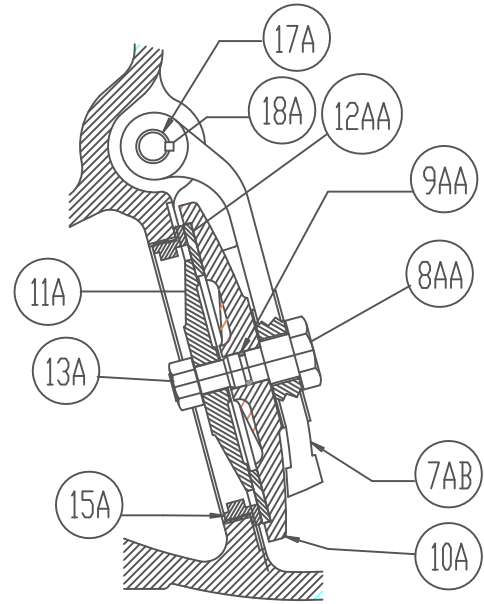
DWN: TRIJ
 DATE: 9/1/12
 DWG. NO.
 CV-A1-LS

2" THRU 12"
 LEVER & SPRING SWING CHECK
 AWWA C508-STYLE 259-02
 (PAGE 1 OF 2)



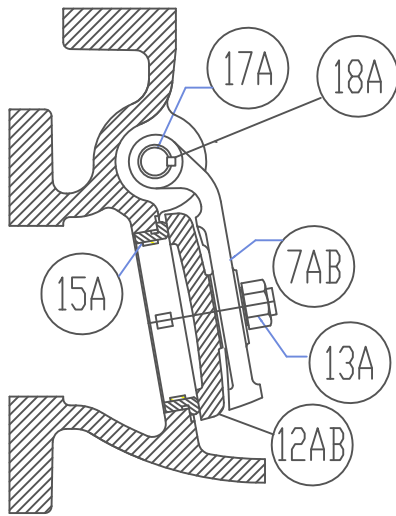
4'-12" LEVER & WEIGHT BRONZE SEATED DISC ASSEMBLY

7AB	1	HINGE W/KEYWAY	DUCTILE IRON A-536
8AB	1	DISC BOLT	(4'-8") STEEL---(10'-12") BRONZE
9AB	2	DISC BOLT WASHER (4'-8")	
12AB	1	DISC	CAST IRON A-126 CLASS B
13A	1	DISC NUT	18-8 STAINLESS STEEL
14A	1	DISC RING	BRONZE
15A	1	SEAT RING	BRONZE
17A	1	EXTENDED HINGE PIN	STAINLESS STEEL A-276 (304)
18A	2	KEY	STAINLESS STEEL A-276 (304)



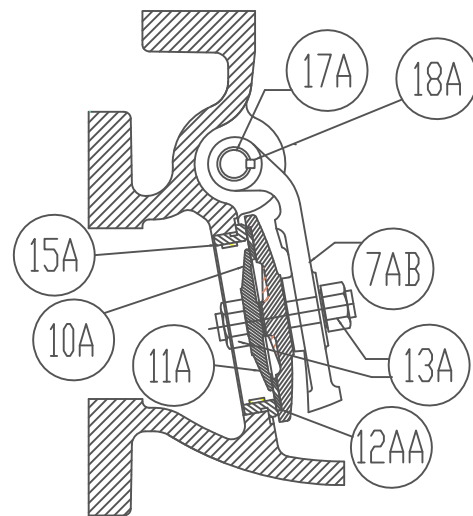
4'-12" LEVER & WEIGHT RESILIENT SEATED DISC ASSEMBLY

7AB	1	HINGE W/KEYWAY	DUCTILE IRON A-536
8AA	1	DISC BOLT	(4'-8") STEEL---(10'-12") BRONZE
9AA	1	DISC BOLT O-RING (10',12")	SYNTHETIC RUBBER
10A	1	DISC HOLDER	CAST IRON A-126 CLASS B
11A	1	DISC PLATE	BRONZE
12AA	1	DISC	NITRILE (BUNA N) RUBBER
13A	1	DISC NUT	18-8 STAINLESS STEEL
15A	1	SEAT RING	BRONZE
17A	1	EXTENDED HINGE PIN	STAINLESS STEEL A-276 (304)
18A	2	KEY	STAINLESS STEEL A-276 (304)



2'-3" LEVER & WEIGHT BRONZE SEATED DISC ASSEMBLY

7AB	1	HINGE W/KEYWAY	BRONZE
12AB	1	DISC (WITH INTEGRAL DISC BOLT)	BRONZE
13A	1	DISC NUT	18-8 STAINLESS STEEL
15A	1	SEAT RING	BRONZE
17A	1	EXTENDED HINGE PIN	STAINLESS STEEL A-276 (304)
18A	2	KEY	STAINLESS STEEL A-276 (304)



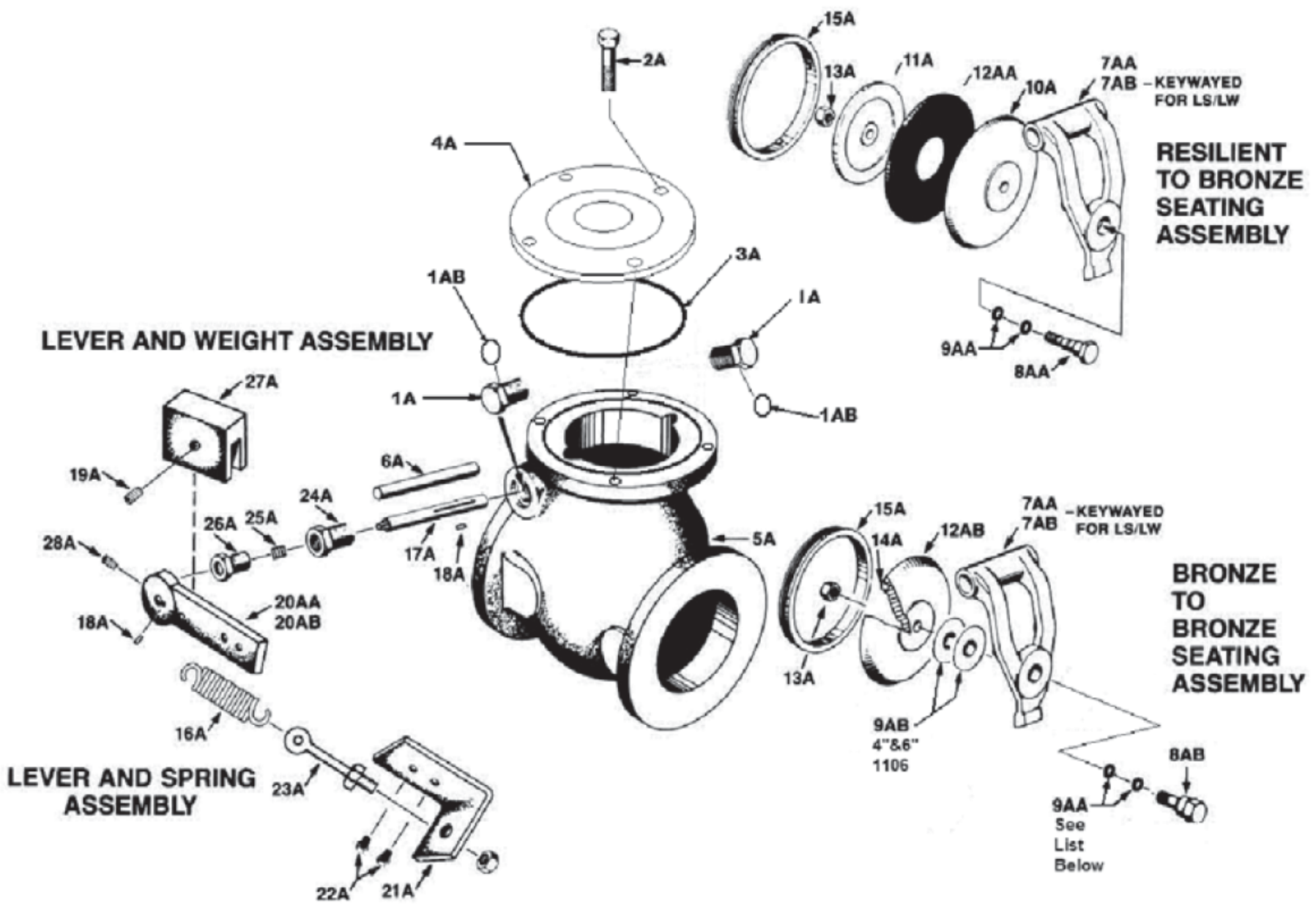
2'-3" LEVER & WEIGHT RESILIENT SEATED DISC ASSEMBLY

7AB	1	HINGE W/KEYWAY	BRONZE
10A	1	DISC HOLDER (WITH INTEGRAL DISC BOLT)	BRONZE
11A	1	DISC PLATE	BRONZE
12AA	1	DISC	NITRILE (BUNA N) RUBBER
13A	2	DISC NUT	18-8 STAINLESS STEEL
15A	1	SEAT RING	BRONZE
17A	1	EXTENDED HINGE PIN	STAINLESS STEEL A-276 (304)
18A	2	KEY	STAINLESS STEEL A-276 (304)

M&H VALVE COMPANY
ANNISTON, ALABAMA
A DIVISION OF MCWANE INC.

DWN: TRIJ
DATE: 9/1/12
DWG. NO.
CV-A2-LS

2" THRU 12"
LEVER & SPRING SWING CHECK
AWWA C508-STYLE 259-02
(PAGE 2 OF 2)



LEVER AND WEIGHT ASSEMBLY

RESILIENT TO BRONZE SEATING ASSEMBLY

BRONZE TO BRONZE SEATING ASSEMBLY

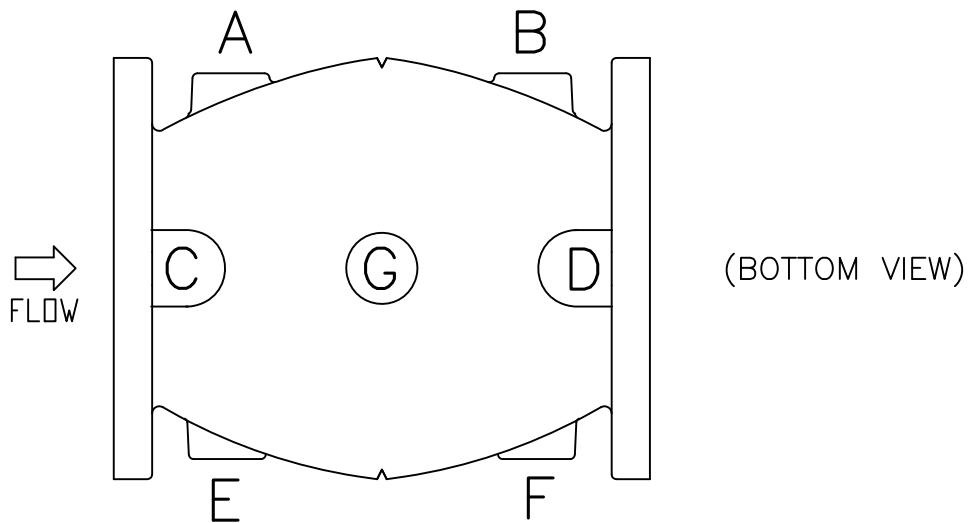
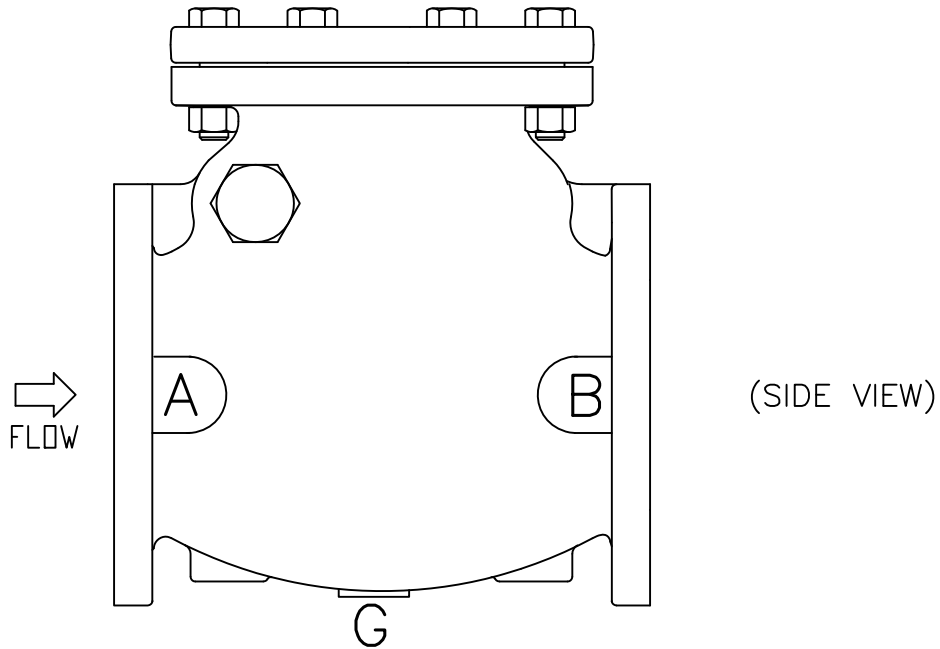
LEVER AND SPRING ASSEMBLY

9AA
See
List
Below

9AB
4" & 6"
1106

7AA
7AB - KEYWAYED FOR LS/LW

7AA
7AB - KEYWAYED FOR LS/LW



When ordering Check Valves tapped for bypass or drain, specify exact location and size of tap using letters above for boss designation. These locations of drain and by-pass tappings conform to the Manufacturers Standardization Society Specification SP-45-1953

AWWA SWING CHECK VALVES MAXIMUM TAP SIZE FOR BOSS LOCATIONS							
SIZE	A	B	C	D	E	F	G
2	0.75	0.75	0.75	NA	NA	NA	NA
2.5	0.75	0.75	0.75	NA	0.75	0.75	NA
3	0.75	0.75	0.75	NA	0.75	0.75	NA
4	1	1	1.25	1.25	1	1	NA
6	1.25	1.25	1.25	1.25	1.25	1.25	NA
8	2	2	1.25	1.25	2	2	0.75
10	2	2	1.25	1.25	2	2	0.75
12	2	2	1.25	1.25	2	2	0.75

M&H VALVE COMPANY
ANNISTON, ALABAMA
A DIVISION OF MCWANE INC.

DWN: TRIJ
DATE: 9/1/12
DWG. NO.
CV-TB

2" THRU 12"
SWING CHECK VALVES (ALL STYLES)
AWWA C508
LOCATION AND DIMENSIONS OF
TAPPING BOSSES