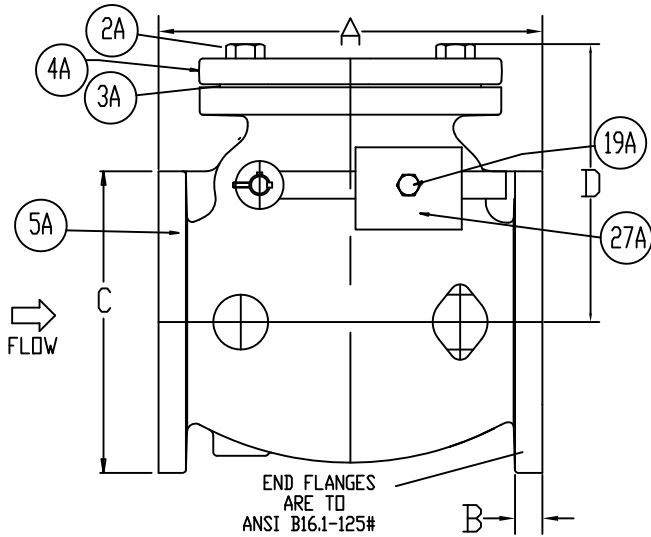
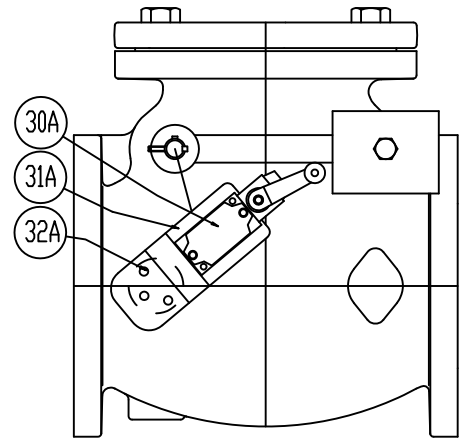
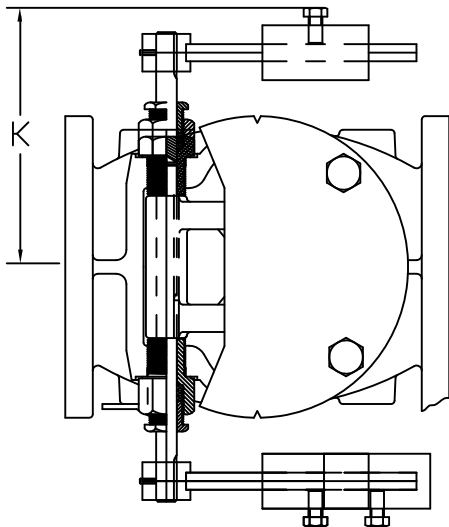


LIMIT SWITCH OPTION



PART	QTY	DESCRIPTION	MATERIAL & ASTM SPEC.
1A	1	SIDE PLUG	BRONZE
2A	*	BOLTS	18-8 STAINLESS STEEL
3A	1	O-RING	BUNA-N
4A	1	CAP	CI A-126 CLASS B
5A	1	BODY	CI A-126 CLASS B
17A	1	EXTENDED HINGE PIN	STAINLESS STEEL A-276 (304)
18A	2	KEY FOR LEVER ARM	STAINLESS STEEL A-276 (304)
19A	1	SET SCREW	STEEL
20AB	1	LEVER ARM	STEEL
24A	1	SIDE PLUG STUFFING BOX	BRONZE
25A	*	PACKING	GRAPHITE FILLED
26A	1	GLAND	BRONZE
27A	1	WEIGHT	CI A-126 CLASS B
28A	1	SET SCREW	STEEL

AUXILIARY DUAL ARM OPTION



LIMIT SWITCH OPTION

30A	1	LIMIT SWITCH	PER ENGINEER SPEC
31A	1	BRACKET	STEEL
32A	*	MOUNTING SCREWS	ZINC PLATED STEEL

\* VARIES ACCORDING TO SIZE

SIZE	A	B	C	D	E	F	G	H	K	WEIGHT
2	8	0.66	6	6	6	6	4.72	0.50	6.4	40
2 1/2	8.5	0.72	7	6.63	7	6	4.94	0.50	6.6	55
3	9.5	0.78	7.5	7.06	7.5	6	5.35	0.50	7.4	92
4	11.5	1.00	9	8.31	9	8.25	8.19	0.63	10.1	157
6	14	1.06	11	10.06	11	10.25	9	0.75	10.9	226
8	19.5	1.25	13.5	12.38	13.5	14.5	10.19	0.88	12.4	402
10	24.5	1.31	16	13.93	16.75	18	11.63	1.00	14.7	625
12	27.5	1.38	19	16.18	19	18	13.75	1.00	16.0	876

USE VALVE FOR VERTICAL OR HORIZONTAL FLOW

NOTE: VERTICAL FLOW MAY REQUIRE FACTORY REPOSITIONING OF LEVER ARM

NOTE: DUAL WEIGHT ARMS ONLY AVAILABLE ON 6" & HIGHER VALVES

STYLE-159-02A 2"-12" WITH RUBBER FACED CLAPPER

STYLE-159-02 2"-12" WITH BRONZE FACED CLAPPER

STYLE-159-02ALS 2"-12" WITH RUBBER FACED CLAPPER & LIMIT SWITCH

STYLE-159-02LS 2"-12" WITH BRONZE FACED CLAPPER & LIMIT SWITCH

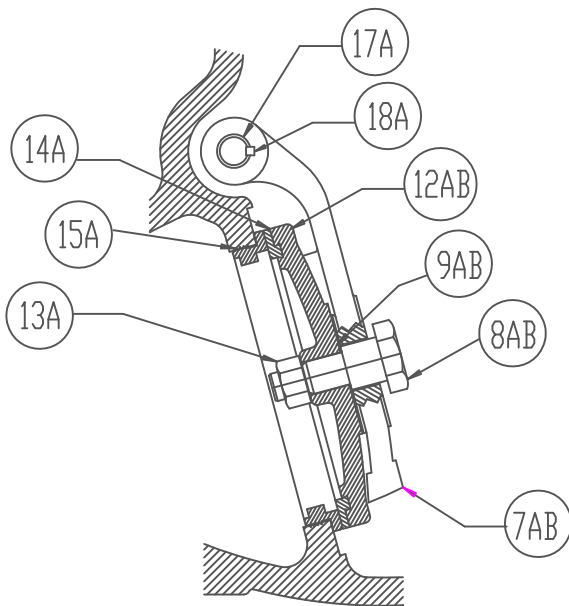
STYLE-159-02AD 6"-12" WITH RUBBER FACED CLAPPER & DUAL ARM

STYLE-159-02D 6"-12" WITH BRONZE FACED CLAPPER & DUAL ARM

M&H VALVE COMPANY  
ANNISTON, ALABAMA  
A DIVISION OF MCWANE INC.

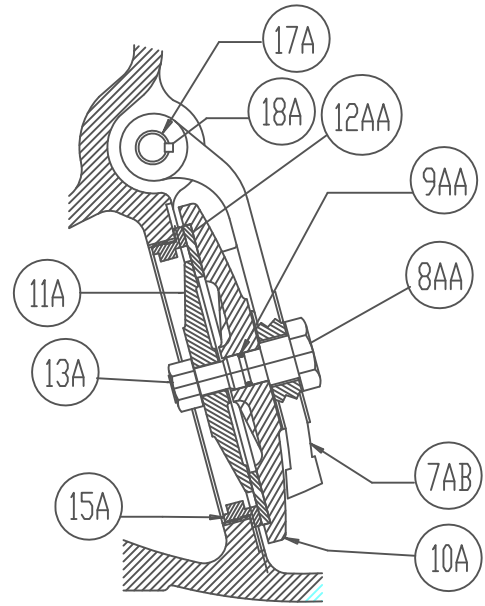
DWN: TRIJ  
DATE: 9/1/12  
DWG. NO.  
CV-A1-LW

2" THRU 12"  
LEVER & WEIGHT SWING CHECK  
AWWA 508-STYLE 159-02  
(PAGE 1 OF 2)



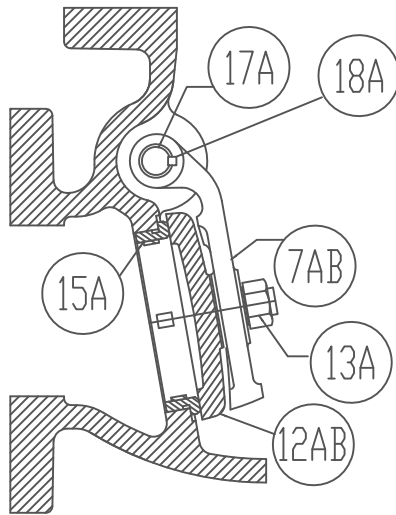
4'-12' LEVER & WEIGHT BRONZE SEATED DISC ASSEMBLY

7AB	1	HINGE W/KEYWAY	DUCTILE IRON A-536
8AB	1	DISC BOLT	(4'-8') STEEL---(10'-12') BRONZE
9AB	2	DISC BOLT WASHER (4'-8")	
12AB	1	DISC	CAST IRON A-126 CLASS B
13A	1	DISC NUT	18-8 STAINLESS STEEL
14A	1	DISC RING	BRONZE
15A	1	SEAT RING	BRONZE
17A	1	EXTENDED HINGE PIN	STAINLESS STEEL A-276 (304)
18A	2	KEY	STAINLESS STEEL A-276 (304)



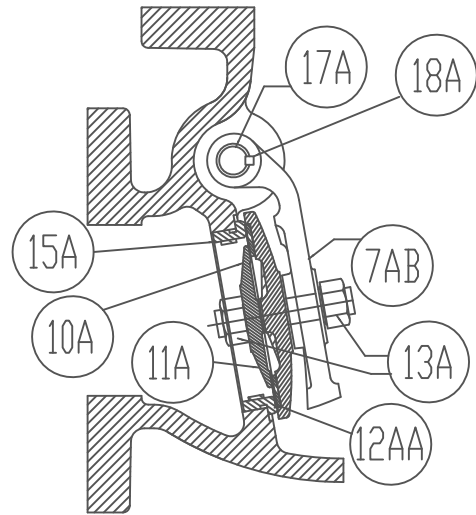
4'-12' LEVER & WEIGHT RESILIENT SEATED DISC ASSEMBLY

7AB	1	HINGE W/KEYWAY	DUCTILE IRON A-536
8AA	1	DISC BOLT	(4'-8') STEEL---(10'-12') BRONZE
9AA	1	DISC BOLT O-RING (10',12")	SYNTHETIC RUBBER
10A	1	DISC HOLDER	CAST IRON A-126 CLASS B
11A	1	DISC PLATE	BRONZE
12AA	1	DISC	NITRILE (BUNA N) RUBBER
13A	1	DISC NUT	18-8 STAINLESS STEEL
15A	1	SEAT RING	BRONZE
17A	1	EXTENDED HINGE PIN	STAINLESS STEEL A-276 (304)
18A	2	KEY	STAINLESS STEEL A-276 (304)



2'-3' LEVER & WEIGHT BRONZE SEATED DISC ASSEMBLY

7AB	1	HINGE W/KEYWAY	BRONZE
12AB	1	DISC (WITH INTEGRAL DISC BOLT)	BRONZE
13A	1	DISC NUT	18-8 STAINLESS STEEL
15A	1	SEAT RING	BRONZE
17A	1	EXTENDED HINGE PIN	STAINLESS STEEL A-276 (304)
18A	2	KEY	STAINLESS STEEL A-276 (304)



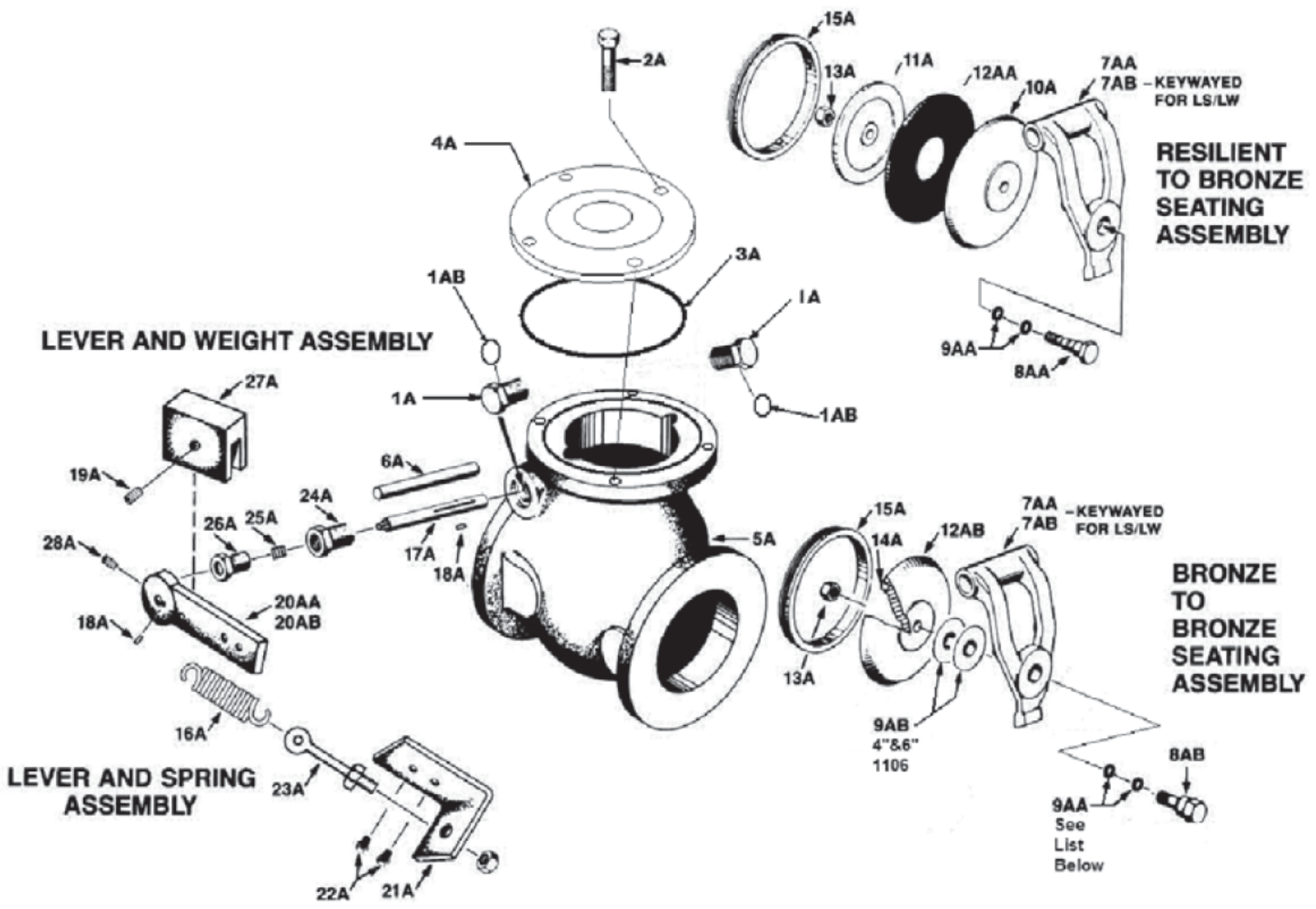
2'-3' LEVER & WEIGHT RESILIENT SEATED DISC ASSEMBLY

7AB	1	HINGE W/KEYWAY	BRONZE
10A	1	DISC HOLDER (WITH INTEGRAL DISC BOLT)	BRONZE
11A	1	DISC PLATE	BRONZE
12AA	1	DISC	NITRILE (BUNA N) RUBBER
13A	2	DISC NUT	18-8 STAINLESS STEEL
15A	1	SEAT RING	BRONZE
17A	1	EXTENDED HINGE PIN	STAINLESS STEEL A-276 (304)
18A	2	KEY	STAINLESS STEEL A-276 (304)

M&H VALVE COMPANY  
ANNISTON, ALABAMA  
A DIVISION OF MCWANE INC.

DWN: TRIJ  
DATE: 9/1/12  
DWG. NO.  
CV-A2-LW

2" THRU 12"  
LEVER & WEIGHT SWING CHECK  
AWWA C508-STYLE 159-02  
(PAGE 2 OF 2)



7AA  
7AB - KEYWAYED FOR LS/LW

**RESILIENT TO BRONZE SEATING ASSEMBLY**

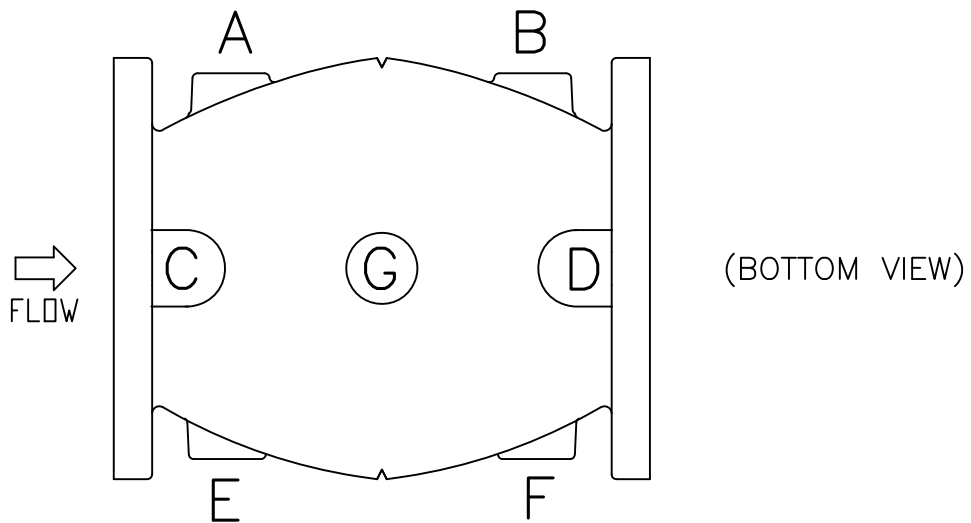
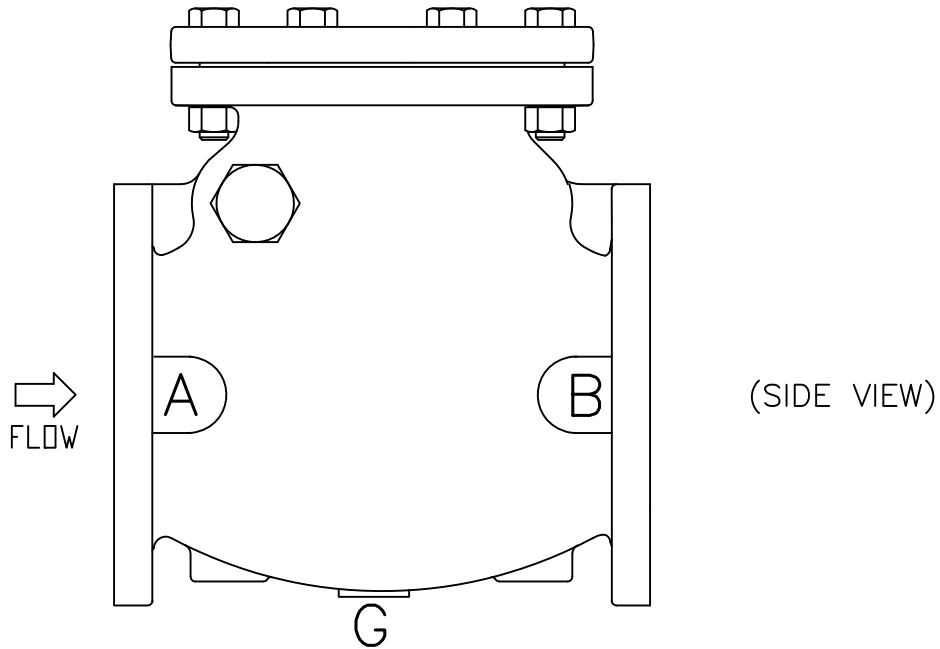
**LEVER AND WEIGHT ASSEMBLY**

**LEVER AND SPRING ASSEMBLY**

**BRONZE TO BRONZE SEATING ASSEMBLY**

9AA See List Below

9AB 4" & 6" 1106



When ordering Check Valves tapped for bypass or drain, specify exact location and size of tap using letters above for boss designation. These locations of drain and by-pass tappings conform to the Manufacturers Standardization Society Specification SP-45-1953

AWWA SWING CHECK VALVES MAXIMUM TAP SIZE FOR BOSS LOCATIONS							
SIZE	A	B	C	D	E	F	G
2	0.75	0.75	0.75	NA	NA	NA	NA
2.5	0.75	0.75	0.75	NA	0.75	0.75	NA
3	0.75	0.75	0.75	NA	0.75	0.75	NA
4	1	1	1.25	1.25	1	1	NA
6	1.25	1.25	1.25	1.25	1.25	1.25	NA
8	2	2	1.25	1.25	2	2	0.75
10	2	2	1.25	1.25	2	2	0.75
12	2	2	1.25	1.25	2	2	0.75

M&H VALVE COMPANY  
ANNISTON, ALABAMA  
A DIVISION OF MCWANE INC.

DWN: TRIJ  
DATE: 9/1/12  
DWG. NO.  
CV-TB

2" THRU 12"  
SWING CHECK VALVES (ALL STYLES)  
AWWA C508  
LOCATION AND DIMENSIONS OF  
TAPPING BOSSES