

1. FLOW MAY BE IN EITHER DIRECTION
2. VALVE SHAFT WILL MEET OR EXCEED AWWA C504 REQUIREMENTS
3. REFERENCE AWWA C504 FOR FLANGES AND DRILLING (ANSI 125)
4. 72 TURNS TO CLOSE
5. (16) 3/4" BOLTS ON MECH. JOINT
6. OPERATED BY 2" AWWA OPERATING / WRENCH NUT
7. RATED FOR 250psi WORKING PRESSURE
8. GASKETS, GLANDS AND BOLTS FOR MECHANICAL JOINT FURNISHED WITH VALVE WHEN SPECIFIED ON ORDER

THIS DWG. AND ALL INFORMATION IS OUR PROPERTY AND SHALL NOT BE USED, COPIED, OR REPRODUCED WITHOUT WRITTEN CONSENT. DESIGN AND INVENTION RIGHTS RESERVED.



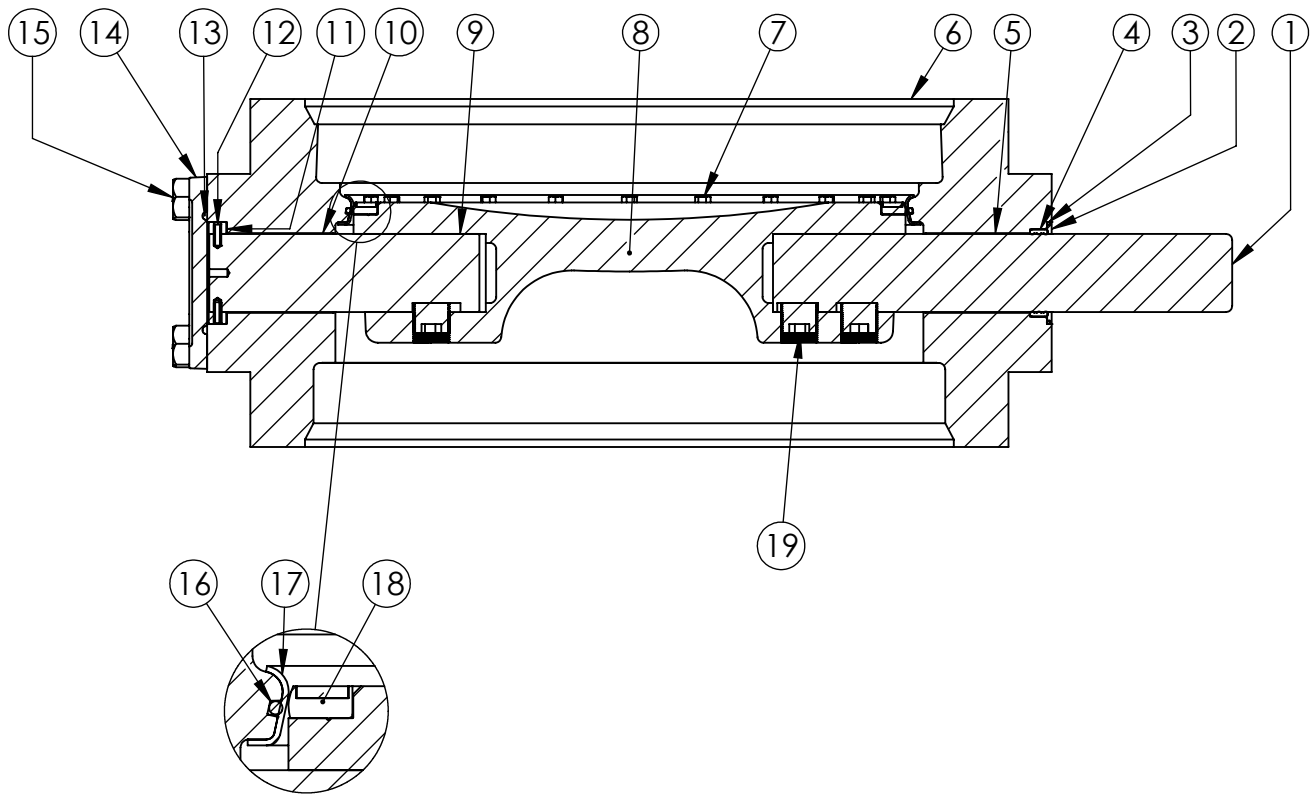
**M&H VALVE COMPANY**

A DIVISION OF McWANE INC.  
 P.O. BOX 2088  
 ANNISTON, ALABAMA 36202

DWG. NO.  
 BD24-M33-M1110-11110

DRAWN: EMW	REV.
DATE: 05/13/2021	-

24" AWWA C504 BUTTERFLY VALVE  
 MECHANICAL JOINT - RATED CLASS 250  
 BURIED OPERATOR - OPEN LEFT



ITEM NO.	DESCRIPTION	MATERIAL
1	OPERATOR SHAFT	630 STAINLESS STEEL, ASTM A-564
2	SHAFT SEAL RING	STEEL
3	SEAL RING O-RING	BUNA-N
4	RUBBER PACKING	BUNA-N
5	UPPER BODY BUSHING	FIBERGLIDE
6	VALVE BODY	DUCTILE IRON, ASTM A-536, GR 70-50-05
7	VANE BOLTS	18-8 STAINLESS STEEL
8	VANE	DUCTILE IRON, ASTM A-536, GRADE 70-50-05
9	THRUST SHAFT	304 STAINLESS STEEL, ASTM A-276
10	LOWER BODY BUSHING	FIBERGLIDE BACKED WITH STAINLESS STEEL
11	THRUST BEARING	BRONZE
12	THRUST BEARING PIN	420 STAINLESS STEEL
13	END COVER O-RING	EPDM
14	END COVER	DUCTILE IRON, ASTM A-536, GR 70-50-05
15	END COVER BOLTS	18-8 STAINLESS STEEL
16	BODY O-RING	EPDM
17	BODY SEAT RING	316 STAINLESS STEEL, ASTM A-276
18	VANE SEAT RING	EPDM & 304 STAINLESS STEEL
19	SHAFT TORQUE PLUG	304 STAINLESS STEEL, ASTM A-276

THIS DWG. AND ALL INFORMATION IS OUR PROPERTY AND SHALL NOT BE USED, COPIED, OR REPRODUCED WITHOUT WRITTEN CONSENT. DESIGN AND INVENTION RIGHTS RESERVED.



**M&H VALVE COMPANY**

A DIVISION OF McWANE INC.  
P.O. BOX 2088  
ANNISTON, ALABAMA 36202

DWG. NO.

BB24-M33-B0000-11110

DRAWN: CTJ

REV.

DATE: 9/16/2021

-

24" AWWA C504 BUTTERFLY VALVE  
MECHANICAL JOINT - RATED CL250  
BODY SUB-ASM MATERIAL LIST