

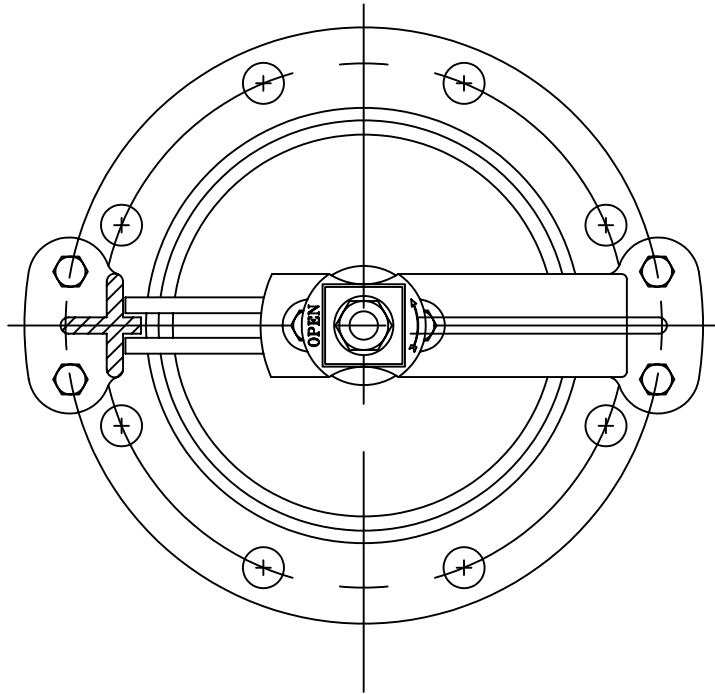
PARTS LIST					
ITEM	DESCRIPTION	REQ'D	MATERIAL	ASTM	
1	YOKE	1	CAST IRON	A126	CL. B
2	FRAME W/BRZ RING	1	CAST IRON	A126	CL. B
3	PLUG	1	CAST IRON	A126	CL. B
4	WRENCH NUT	1	CAST IRON	A126	CL. B
5	STEM	1	BRONZE	B136	ALLOY 675
6	STEM CAP	1	CAST IRON	A126	CL .B
7	CAP SCREW	2	STEEL		ASA B18.6.2
8	CAP SCREW	4	STEEL		ASA B18.6.2
9	CAP NUT	1	STEEL	A307	GR. B PLT'D
10	PLUG SEAT	1	BUNA-N		50 DURD

M&H VALVE COMPANY
ANNISTON, ALABAMA
A DIVISION OF MCWANE INC.

DWN: TRIJ
DATE: 7/1/05
DWG. NO.
MV-A1

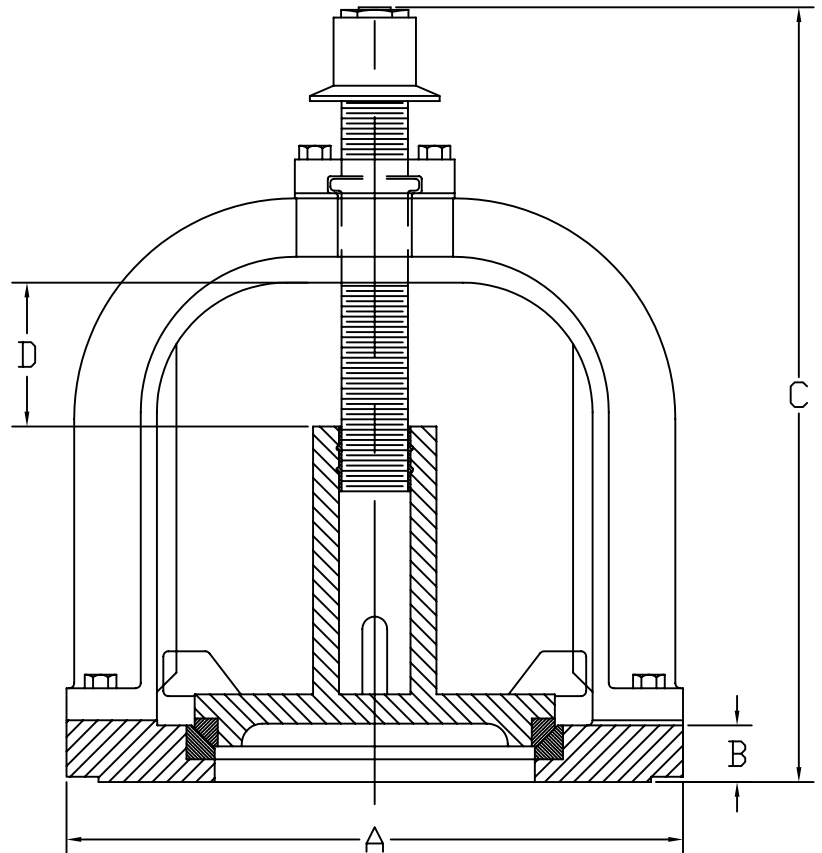
4" THRU 24" MUD VALVES
VALVE ASSEMBLY / MATERIAL LIST
STYLE 140-02
FLANGED CONNECTION

NON-RISING STEM MUD VALVE				
SIZE	A	B	C	D
3"	7 1/2	3/4	11 3/8	1 3/4
4"	9	15/16	14 3/4	1 7/8
6"	11	1	16 3/8	3 1/8
8"	13 1/2	1 1/8	19 3/8	4 5/16
10"	16	1 3/16	22 7/8	5 3/8
12"	19	1 1/4	24 3/4	6 9/16
14"	21	1 3/8	27 1/4	7 5/8
16"	23 1/2	1 7/16	29 7/8	8 7/16
18"	25	1 9/16	32 3/4	8 7/8
20"	27 1/2	1 11/16	37	9 7/8
24"	32	1 7/8	41 7/8	12 1/4



RISING STEM MUD VALVE				
SIZE	A	B	C	D
4"	9	15/16	10 3/4	1 7/8
6"	11	1	12 7/16	3 1/8
8"	13 1/2	1 1/8	14 1/4	4 5/16
10"	16	1 3/16	16 1/4	5 3/8
12"	19	1 1/4	18 3/16	6 9/16
14"				
16"	23 1/2	1 7/16	21 1/4	8 7/16
18"	25	1 9/16	23 1/16	8 7/8

14" Currently unavailable



M&H VALVE COMPANY
 A DIVISION OF McWane, Inc.
 P.O. BOX 2088
 ANNISTON, ALABAMA 36202

DWN: TRIJ
 DATE: 7/1/05
 DWG. NO.
 MV-A2

4" THRU 24" MUD VALVES
 GENERAL DIMENSIONS
 STYLE 140-02
 FLANGED CONNECTION