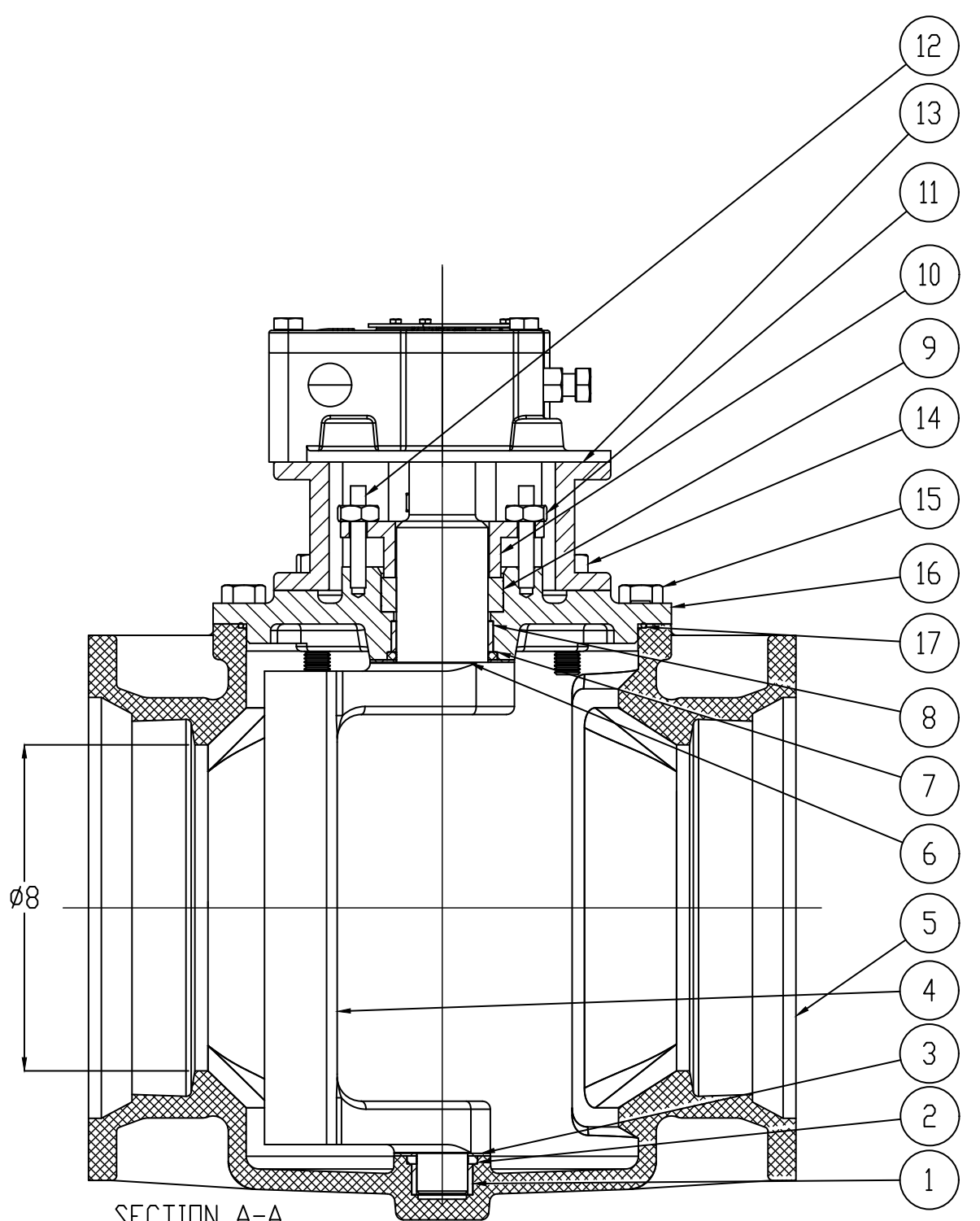
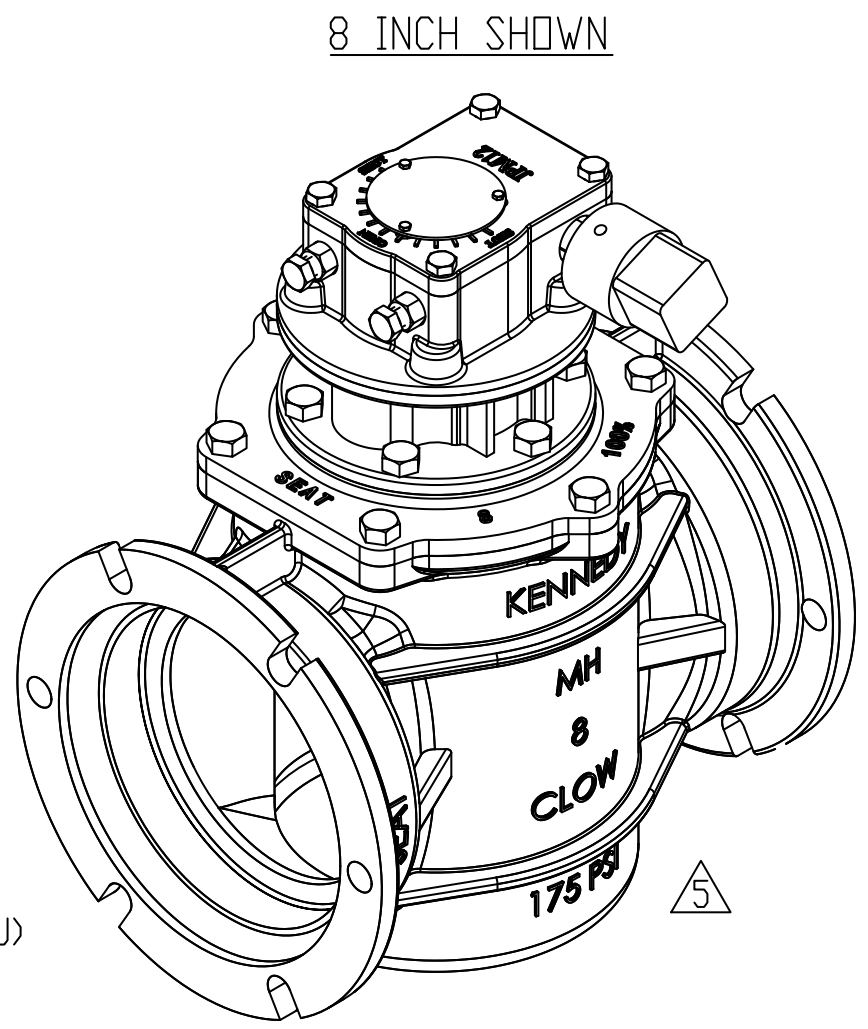
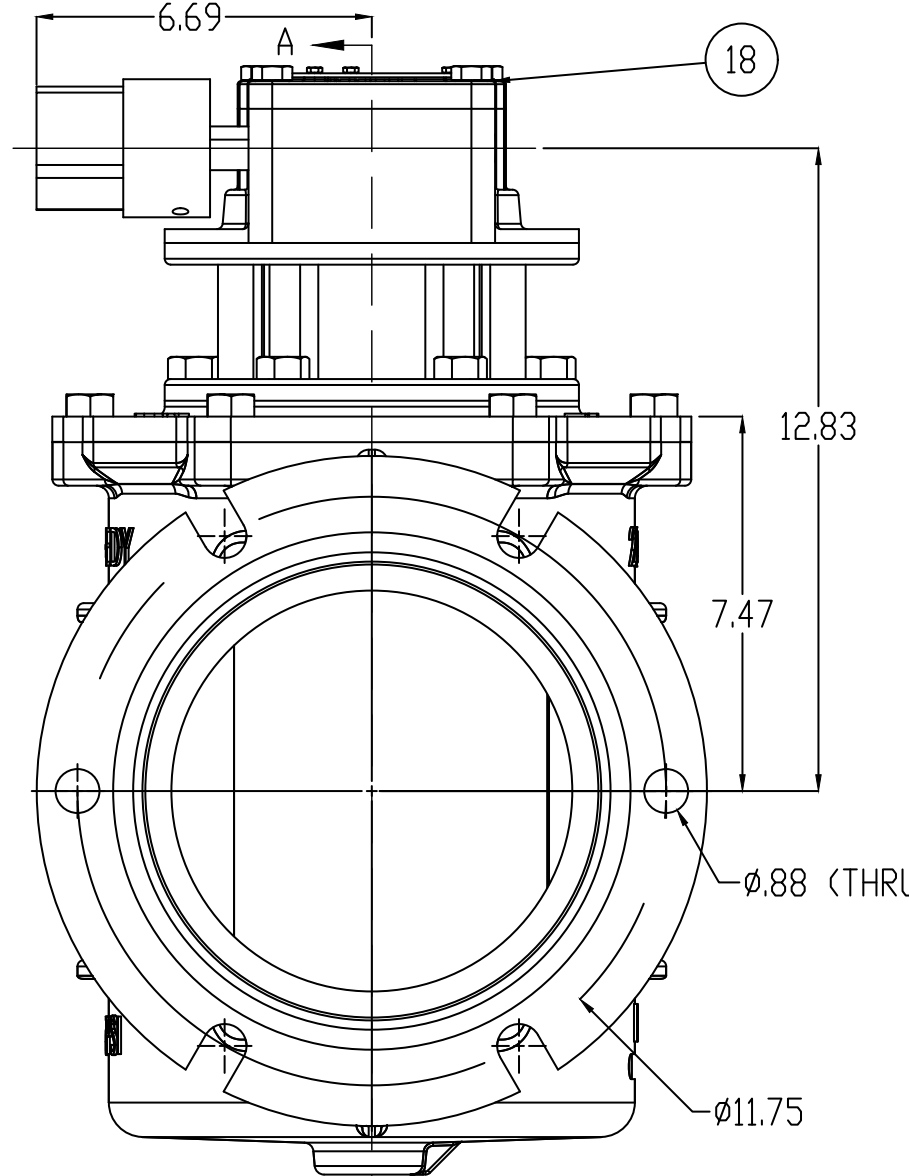
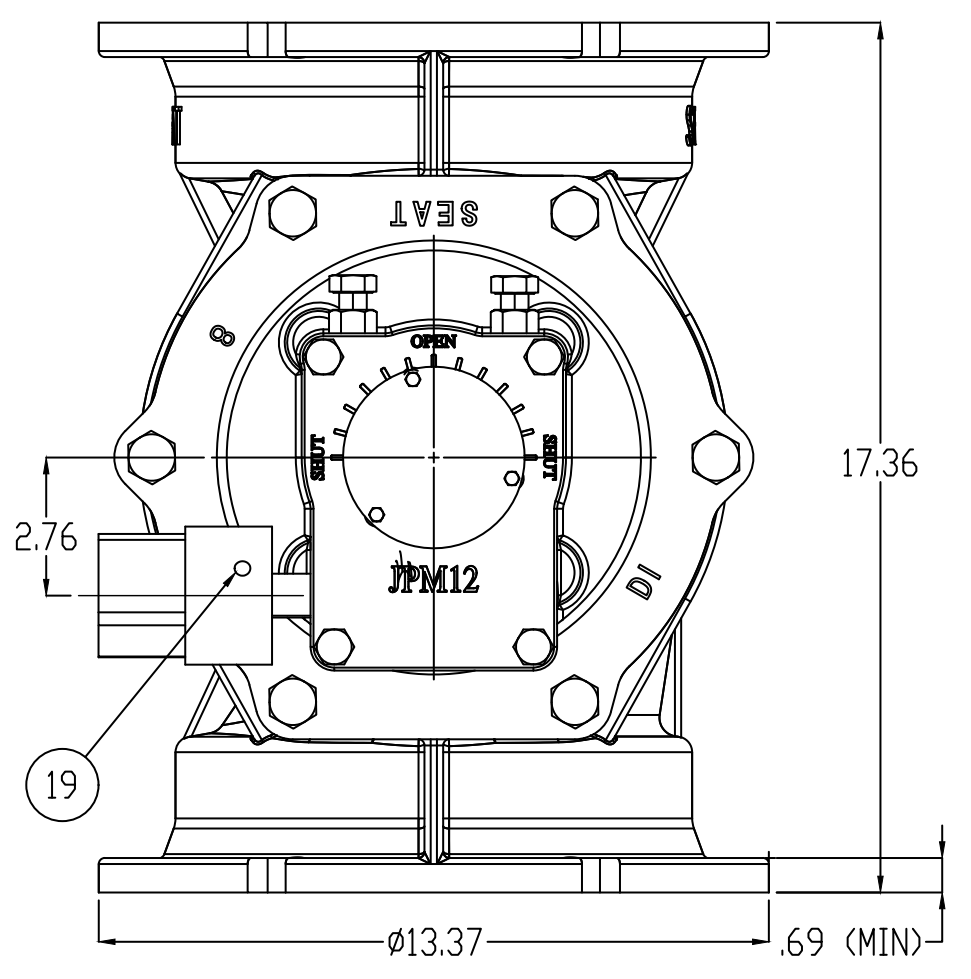


REVISIONS			
REV.	DESCRIPTION	BY	DATE
1	RELEASED	J CAPPER	9/26/17
2	CORRECTED COVER "SEAT" LETTERING	J CAPPER	9/27/2017
3	ADDED 304 SS OPTION TO FASTENER MATERIAL	J CAPPER	8/13/2018
4	UPDATED J DIM, MADE FASTENERS 316 SS STANDARD, EDITED MARKINGS NOTE	J CAPPER	2/25/2019
5	ADDED GEAR RATIO & # OF TURNS TO TABLE, ALSO UPDATED WITH CORRECT BODY BODY MARKINGS	CAW	3/26/2019

VALVE SIZE RANGE	WATER WORKING PRESSURE (PSI)	HYDROSTATIC TEST (PSI)
3-12"	175	350
14-16"	150	300

ITEM#	PART NAME	ASTM/ DESIGNATION	QTY.
1	LOWER SLEEVE BEARING	SINTERED ALLOY SS316	11
2	LOWER GRIT SEAL	NBR	1
3	LOWER THRUST WASHER	PTFE	1
4	PLUG	ASTM A536 GR.65-45-12 or GR.75-50-05 +NBR	1
5	BODY	ASTM A536 GR. 65-45-12 or 70-50-05	1
6	UPPER THRUST WASHER	PTFE	1
7	UPPER GRIT SEAL	NBR	1
8	UPPER SLEEVE BEARING	SINTERED ALLOY SS316	1
9	V-PACKING	NBR	1
10	FOLLOWER GLAND	ASTM A536 GR. 65-45-12 or 70-50-05	1
11	HEX NUTS	STAINLESS STEEL ASTM A276.T316	2
12	STUDS	STAINLESS STEEL ASTM A276.T316	2
13	ADAPTER	ASTM A536 GR. 65-45-12 or 70-50-05	1
14	ADAPTER BOLTS	STAINLESS STEEL ASTM A276.T316	6
15	COVER BOLTS	STAINLESS STEEL ASTM A276.T316	4
16	COVER	ASTM A536 GR. 65-45-12 or 70-50-05	1
17	COVER O-RING	NBR	1
18	JPM GEAR w/ DP NUT	-----	1
19	SLOT TYPE SPRING PIN	ASTM A29 1566	1

NOTE:
 * FOR SERVICES WITH 3"- 8" PLUG VALVES IN EXCESS OF 25 PSI, USE OF A GEAR IS RECOMMENDED.
 * GEAR MODEL AND BRAND ARE SUBJECT TO CHANGE WITHOUT NOTICE.



SECTION A-A
SCALE 1 : 2.5

A VALVE SIZE	B	C	D	F	G	H	I	J	K	WEIGHT [LBS.]	JPM GEAR	GEAR RATIO	# OF TURNS TO OPEN (APPROX)
3	11.50	.58	∅ 7.62	4 x .75 THRU	∅ 6.19	3.76	7.50	9.01	2.8	75 LBS	JPM12B	40	10
4	14.25	.60	∅ 9.06	4 x .88 THRU	∅ 7.50	4.65	8.28	9.01	2.8	100 LBS	JPM12B	40	10
6	15.75	.63	∅ 11.06	6 x .88 THRU	∅ 9.50	5.78	10.30	9.41	2.8	165 LBS	JPM12FB	40	10
8	17.36	.66	∅ 13.39	6 x .88 THRU	∅ 11.75	7.48	12.54	9.41	2.8	230 LBS	JPM12FB	40	10
10	19.37	.70	∅ 15.62	8 x .88 THRU	∅ 14.25	8.88	14.02	10.08	3.9	340 LBS	JPM14B	53	13
12	20.75	.73	∅ 17.88	8 x .88 THRU	∅ 16.25	11.00	16.38	10.08	3.9	480 LBS	JPM14B	53	13
14	24.50	.79	∅ 20.25	10 x .88 THRU	∅ 18.75	12.88	18.00	10.71	4.9	720 LBS	JPM15B	68	17
16	27.25	.85	∅ 22.50	12 x .88 THRU	∅ 21.00	14.69	22.50	10.71	4.9	850 LBS	JPM15B	68	17

NOTE:
 1. BODY CASTINGS ARE TRI-MARKED WITH "CLOW," "KENNEDY," AND "M&H"

DRAWN	J CAPPER	9/26/17		M&H VALVE
CHECKED				Division of McWane, Inc.
APPROVED				605 West 23rd Street, Anniston, Alabama 36201
DO NOT SCALE DRAWING			TITLE:	3"-16" "FULL FLOW" MJ EPV NON-DOM
MATERIAL: SEE TABLE				6412-FF w/ JPM Gear - DP NUT
WEIGHT: SEE TABLE			SIZE	D
			DWG. NO.	SUB910444T
			REV	5

PROPRIETARY AND CONFIDENTIAL
 THE INFORMATION CONTAINED HEREIN IS THE SOLE PROPERTY OF M&H VALVE CO. ANY REPRODUCTION IN PART OR AS A WHOLE WITHOUT THE WRITTEN PERMISSION OF M&H VALVE CO. IS PROHIBITED. DESIGN & INVENTION RIGHTS RESERVED.